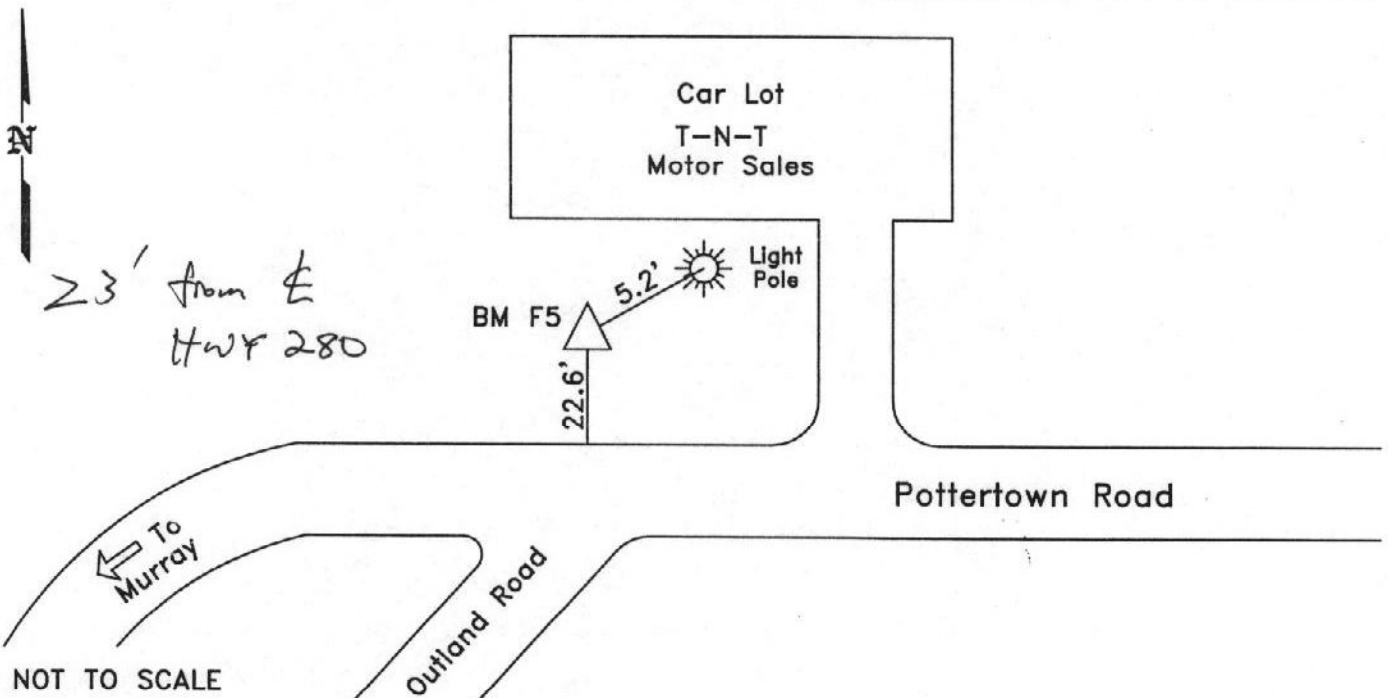


CITY OF MURRAY CONTROL MONUMENT CARD

DESIGNATION: BM F5
TYPE: CONCRETE MONUMENT W/ CITY DISK
DATE SET: JUNE 2002 QUAD: MURRAY, KY.
HORIZONTAL DATUM: NAD-83 VERTICAL DATUM: NAVD-88
STATE: KENTUCKY COUNTY: CALLOWAY ZONE: KY. S 1602

NORTHING: 1756204.42 FT
EASTING: 905458.08 FT
ELEVATION: 517.79 FT (GPS)
LATITUDE: N 36°37'28.54108" LONGITUDE: W 088°15'16.85837"
SCALE: CONVERGENCE:
PLANE AZI. TO AZI. MARK:

To Reach: Located at the intersection of Pottertown Road and Outland Road, in front of T-N-T Motor Sales.



GRW Aerial Surveys, Inc.
801 Corporate Dr. Lexington Ky. 40503
(859)223-3999